



Downloading and Installing NIS-Elements 3.0 AR and BR

Getting Started: A Glossary of terms

- Version: A Major Release (2.0, 2.1, 2.2, 2.3, 3.0).
 - We are currently at the 3.0 Release.
- Build: Software is written and compiled often. Each compiled set is called a “build.” You will see the build numbers increase in jumps. There can be a number of different builds per version.
 - We are currently at the 449 build.
- Local Option: drivers and modules released specifically for our market
- Hot Fix: small patches written to solve one specific problem
- Service Pack: A full set of software updates. Running a Service Pack will update the system with all of the incremental updates that are occasionally released called “Hot Fixes” and all of the previous Service Packs released within this version.
 - There are no service packs available yet for Version 3.0.

Access Point for Software Downloads:

<http://66.11.133.18/NikonSaleApplication/>

User Name: YOUR NAME (i.e. J. Doe)

Password: YOUR HASP key #

Install files you will see on website after logging in:



Files to download

[Details on what each file contains.txt](#)
[Downloading and Installing 3.0 AR BR.pdf](#)
[Downloading and Installing 3.0 D.pdf](#)
[NIS 3.0 b449.exe](#)
[NIS 3.0 b449_CD_DB.exe](#)
[NIS D 3.0 b449.exe](#)
[NIS D 3.0 b449_CD_DB.exe](#)

For a NIS-Elements AR or BR Install, please download:

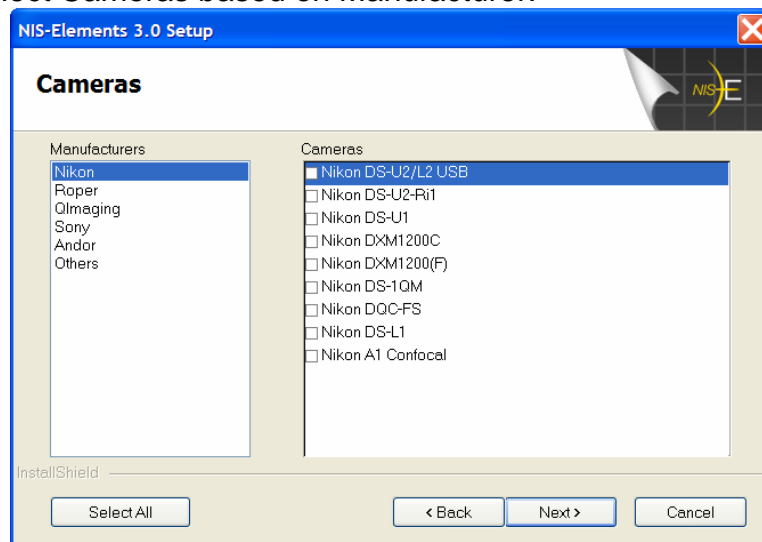
NIS_ARBR_3.00_b449_CD_DB.exe

If you would like to install NIS-Elements AR/BR without the sample databases, please download NIS_3.0_449.exe. The file size is smaller due to the fact that it does not contain the sample databases.

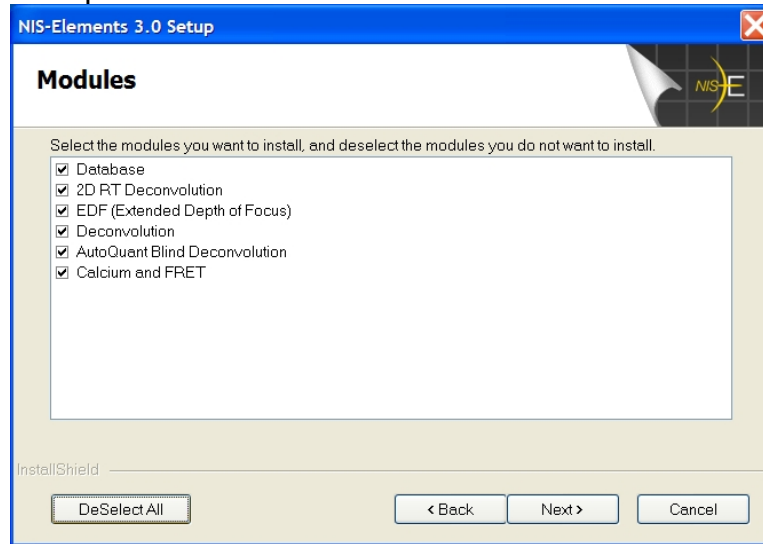
Note: A DVD will be shipping with Version 3.0, which delivers more database images, the EDF examples, the ND2 files and multi-channel image sets that you may be used to working with in previous versions.

Install Instructions:

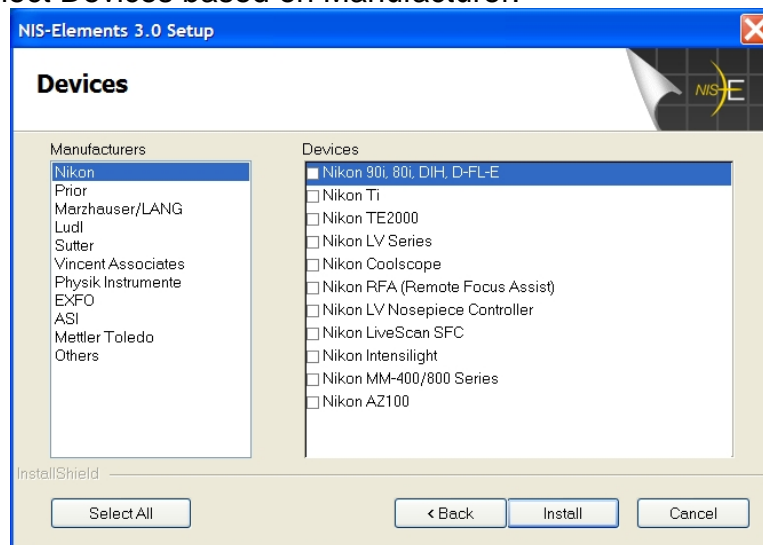
1. Make sure no other versions of NIS-Elements are currently running on your computer.
2. Run NIS_3.0_b449_CD_DB.exe or NIS_3.0_b499.exe by double-clicking on icon.
 - Select Cameras based on Manufacturer:



- Select Options based on Purchase:



- Select Devices based on Manufacturer:



- This will bring the software package up to Build 449.
- Run NIS-Elements.
- If you would like to import your backed up Optical Configurations, Open the Calibration Menu, Select 'Optical Configurations.' Select 'Restore' and point to the back up file.
- *Note: Calibrations of the objective will appear when the software is connected to the camera.*

Common upgrade and install questions

1) Can customers have Version 2.3 and Version 3.0 running on the same computer?

We recommend not running two versions of NIS-Elements.

2) Is it required to backup optical configuration when installing a new version?

Yes, it is recommended to back up optical configurations to a file somewhere on the desktop or a USB for future retrieval.

3) Do we need a CD or DVD for the installation?

You can download the install files from the Sales Application site without having to run the DVD that ships with the NIS-Elements box and HASP key. The benefit of install from the DVD is the access to several example images and datasets.

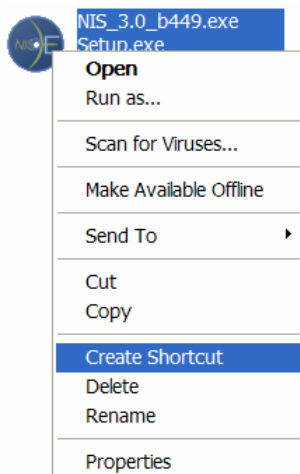
- *NIS 3.0 449.exe installs NIS-Elements without sample databases.*
- *NIS 3.0 b449 CD DB installs NIS-Elements + sample databases.*
- *The NIS-Elements DVD installs NIS-Elements + sample databases and several examples such as EDF images sets, and multi-dimensional image sets for image analysis and visualization.*

4) How do you download/ install simulators for devices?

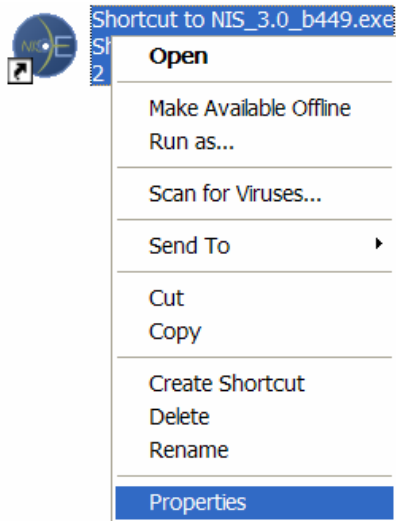
In order to install the simulators, you will need to run the local options version of the install. The procedure for creating a local option install file is listed below:

Installing the Local Options Install

1) Right click on the install icon. Select 'Create Shortcut.'

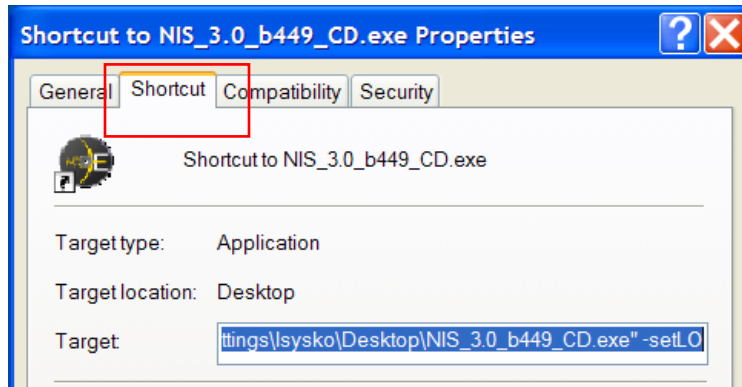


2) Right click on the shortcut. Select 'Properties.'



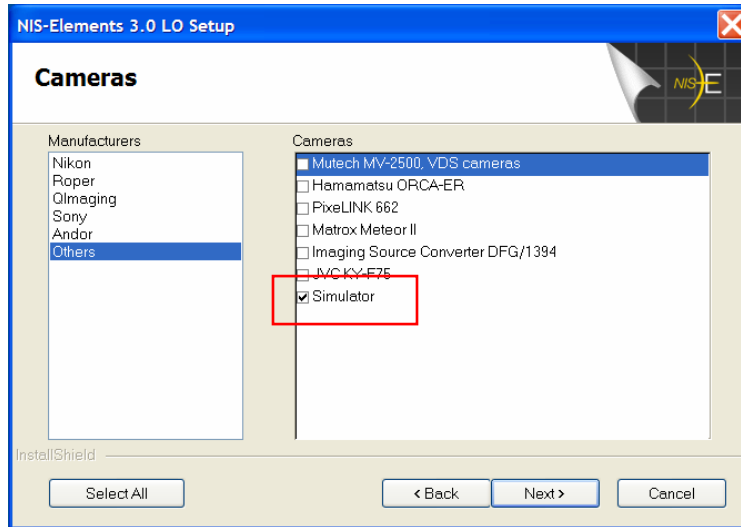
3) Select the 'Shortcut' Tab.
Type in -setLO at the end of the target line.

Click 'OK.'

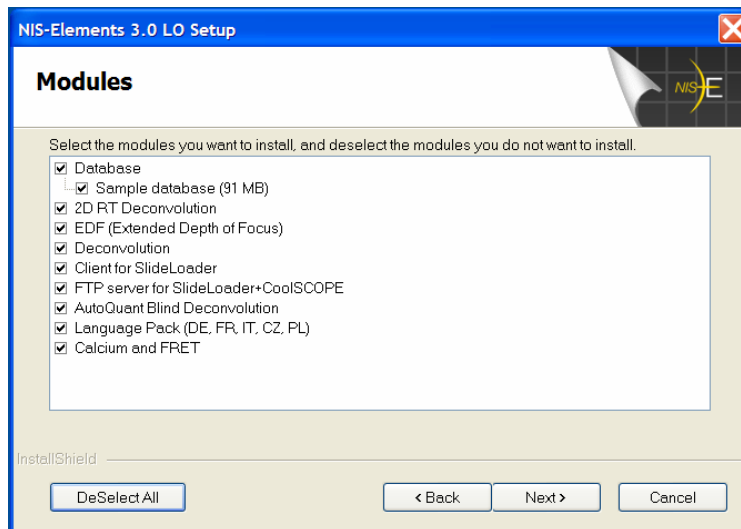


3) Double Click on the Shortcut Icon to install Version 3.0 Build 449- the Local Options (LO) version.

4) If you want to run the camera simulator, select 'Others' in the Cameras section and check 'Simulators'.



5) Select the Modules you wish to have added to the install.
Note: The sample database option becomes available after the Database module has been checked.



6) If you want to run the device simulators, select 'Others' in the Devices section and check 'Simulators'.

