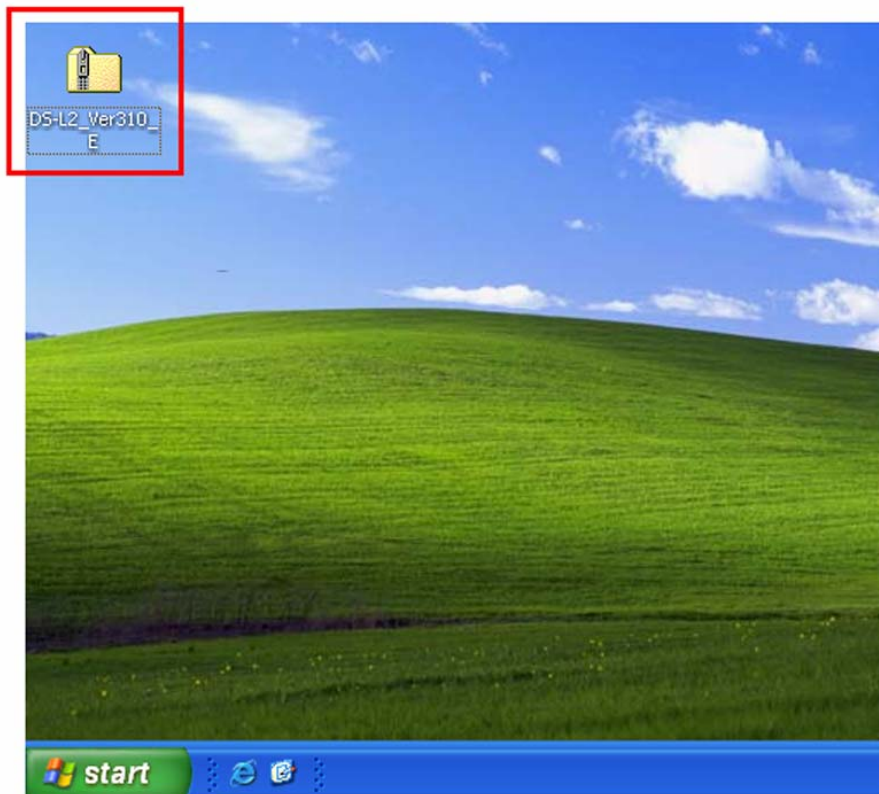


## DS-L2 Firmware Upgrade Procedure 06/15/07

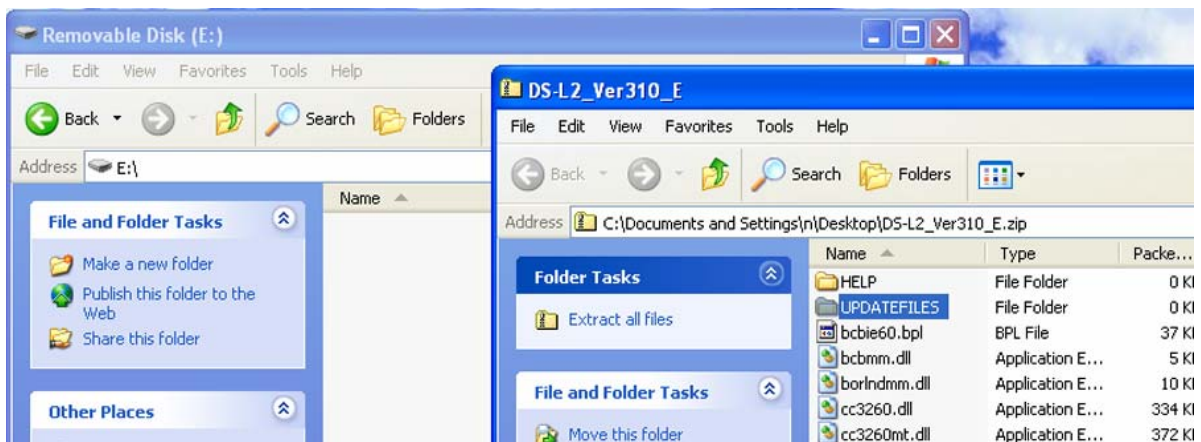
There are two methods for updating the DS-L2 firmware. Firmware can be updated through a network or with a crossed cable over Ethernet using the IP address of the unit. Alternately, the firmware can now be upgraded from Compact Flash or USB memory for systems with firmware v3.00 or later. Download the latest version from the Digital Imaging eRoom in the Software/Firmware section. The version numbers as displayed in the sample images below are for reference and may change appropriately as newer firmware version are released. Network update procedure begins on page 6 of this document.

### **PROCEDURE TO UPDATE FROM USB MEMORY OR CF CARD**

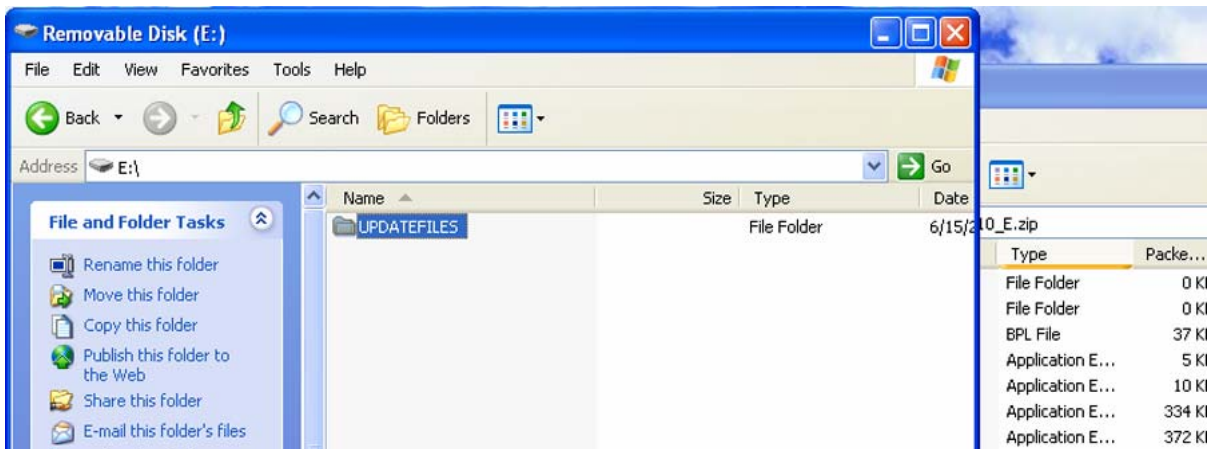
1. Locate the DS-L2 Downloader file, usually provided as a zipped archive. In Windows XP, this will appear as below with the folder icon having a zipper. If using a third-party program like Winzip, extract the .zip archive to a new folder before continuing.



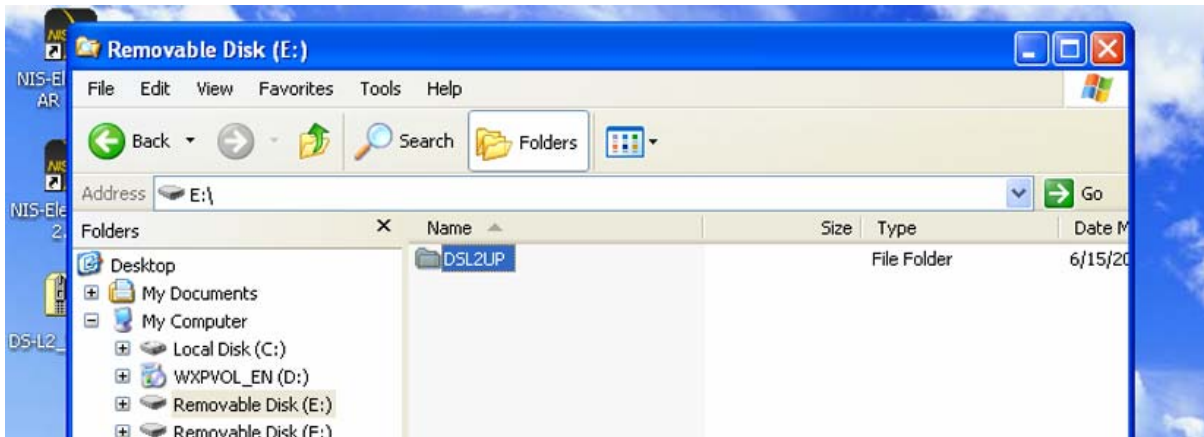
2. Locate either a Compact Flash card or USB Memory Stick that is compatible with the DS-L2 and connect it to the computer.
3. Open the folder containing the firmware update and copy only the entire folder named "UPDATEFILES" to the Compact Flash or USB Memory that you will be using.



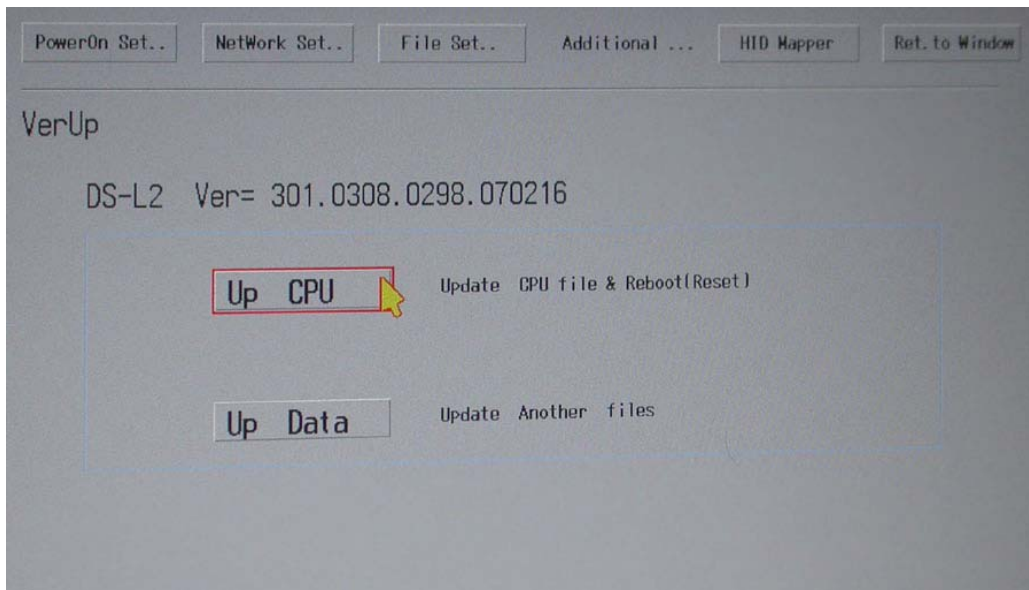
**Copy UPDATEFILES folder to CF or USB memory**



4. Rename the “UPDATEFILES” folder on your CF card or USB memory to “DSL2UP”.

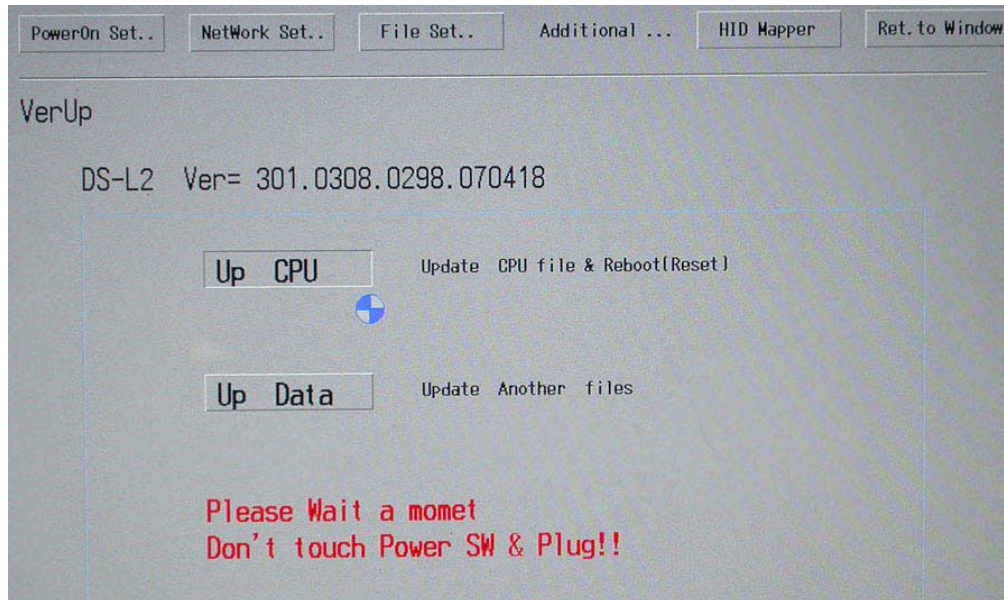


5. Starting with the DS-L2 turned off, connect this storage device to the DS-L2, then turn on the DS-L2. **Disconnect any other USB or network cables and do not connect any other storage device to the DS-L2.**
6. From the **Setup** menu, select **Additional...** to display the following menu which shows the current firmware version:

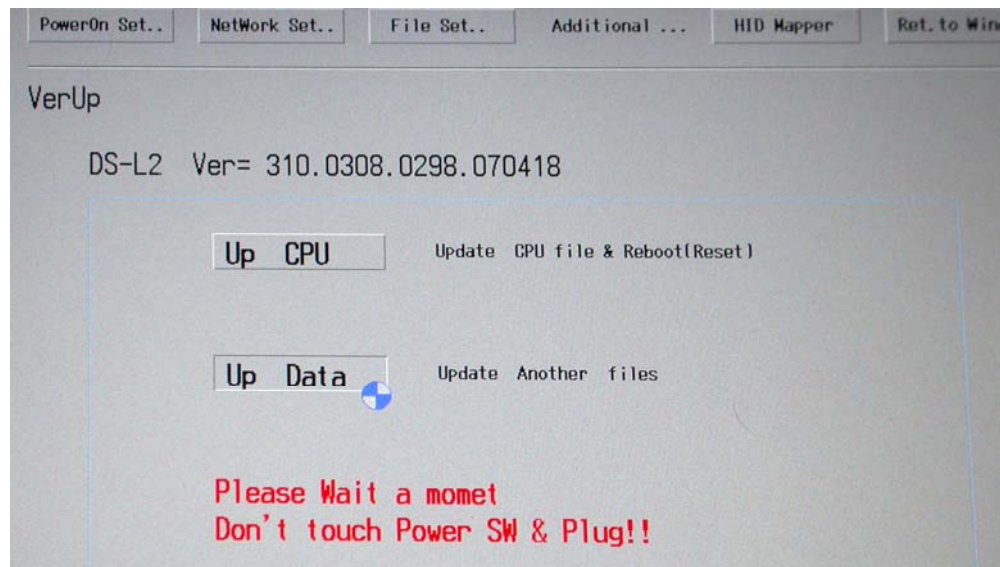


Note that this menu will only appear if a storage device containing a folder named “DSL2UP” is connected to the DS-L2.

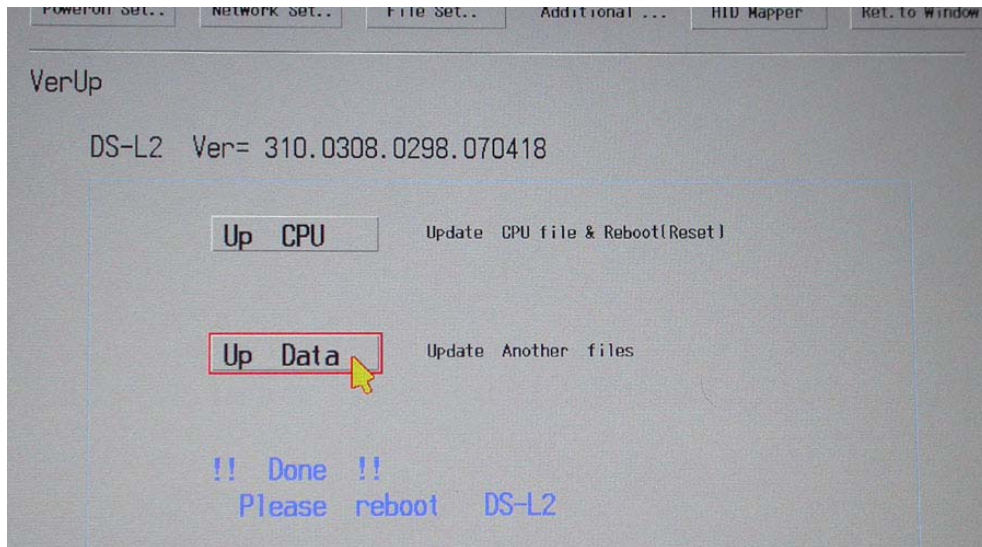
7. Press the “Up CPU” button to begin transfer of the CPU information. The spinning icon may stop and the unit may look frozen, but **do not reset or otherwise disturb the unit during data transfer. Interruption of transfer could disable the unit.** The unit will reboot itself when it is finished.



8. Redisplay the menu in Step 6 by going to the **Setup** menu, and select **Additional...** Press the “Up Data” button to update other data included with the firmware. Again, the spinning icon may stop and the unit may look frozen, but **do not reset or otherwise disturb the unit during data transfer.**



- When finished, the unit will display a message requesting that you reboot the DS-L2.



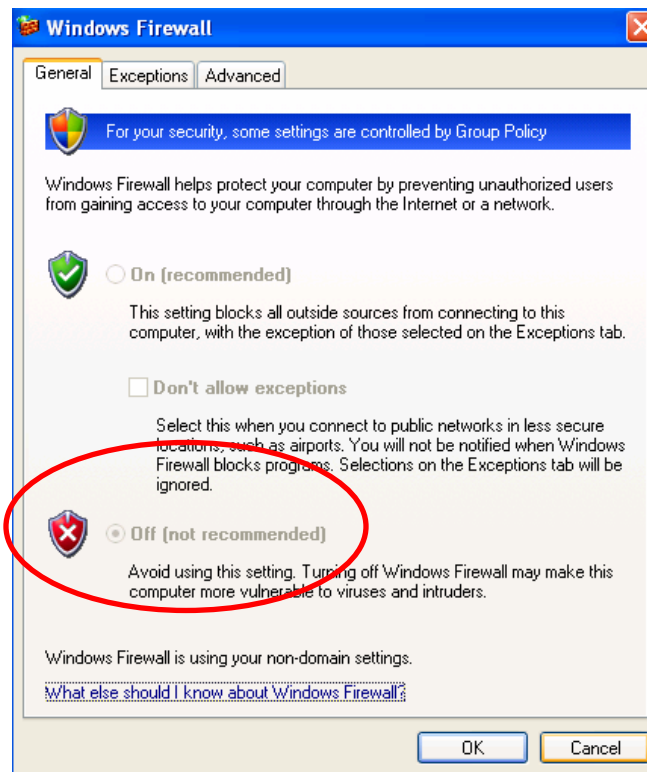
- Reboot the DS-L2 and check the firmware version in the **Setup** menu to confirm the upgrade. The first three digits correspond to the firmware version, i.e. "Ver= 310" means firmware version 3.10.



[nclaxton@nikon.net](mailto:nclaxton@nikon.net)

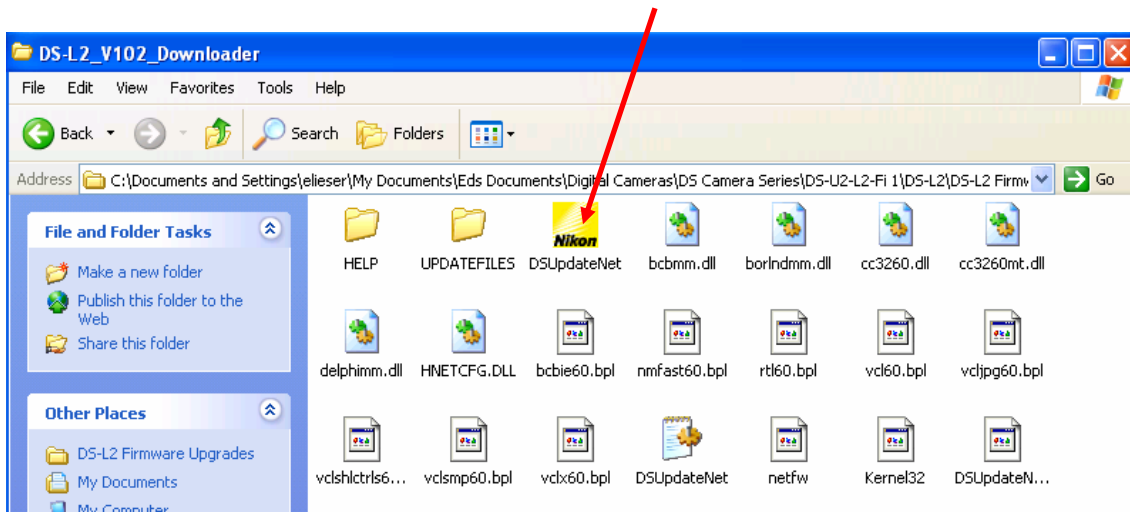
## PROCEDURE TO UPDATE FROM ETHERNET

1. Unzip the DS-L2 Downloader File and a new folder named **DS-L2\_V102\_Downloader** should be created. The version will vary with later updates.
2. You must establish communication between your computer and the L2 using TCP/IP protocol and Internet Explorer. Make note of the IP address as you will need to enter this into the downloader program. Once the connection has been established close Explorer.
3. Select SETUP on the L2 menu and identify the version number in the lower right hand corner of the POWER ON SETTINGS screen.
4. Turn off the L2 Control unit and remove any flash cards or memory sticks.
5. If you are using Windows XP with Service Pack 2 you will need to disable the Windows Firewall. It may already be disabled depending on your company's network configuration. On the Windows taskbar, click Start>Control Panel. Double-click Windows Firewall and click OFF the firewall.

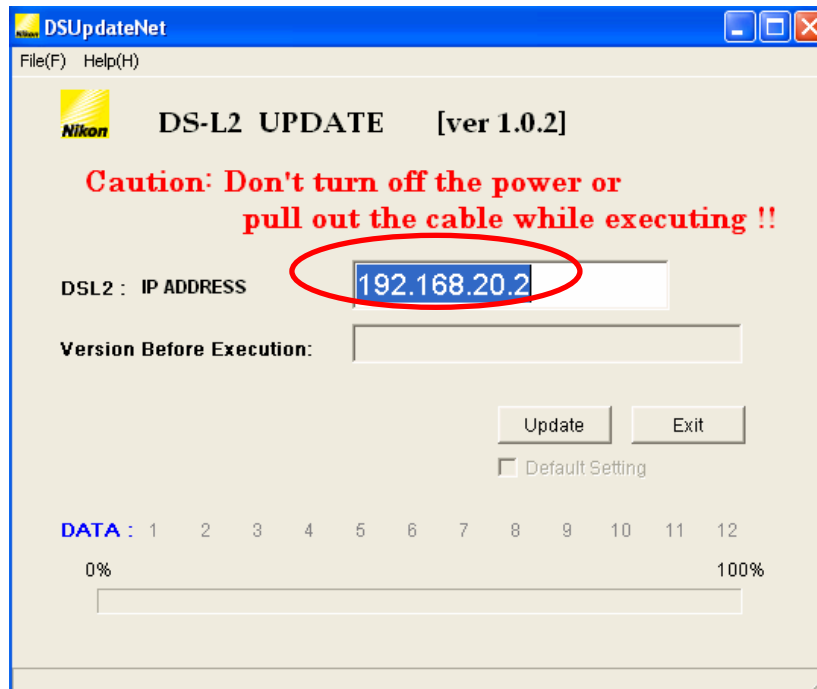


6. If you disabled the Windows Firewall **make sure you enable the firewall after the update. IF YOU DO NOT YOUR COMPUTER WILL BE AT RISK TO VIRUSES OR UNAUTHORIZED ACCESS!**
7. Turn on the L2 control panel and wait until an image appears on the monitor.

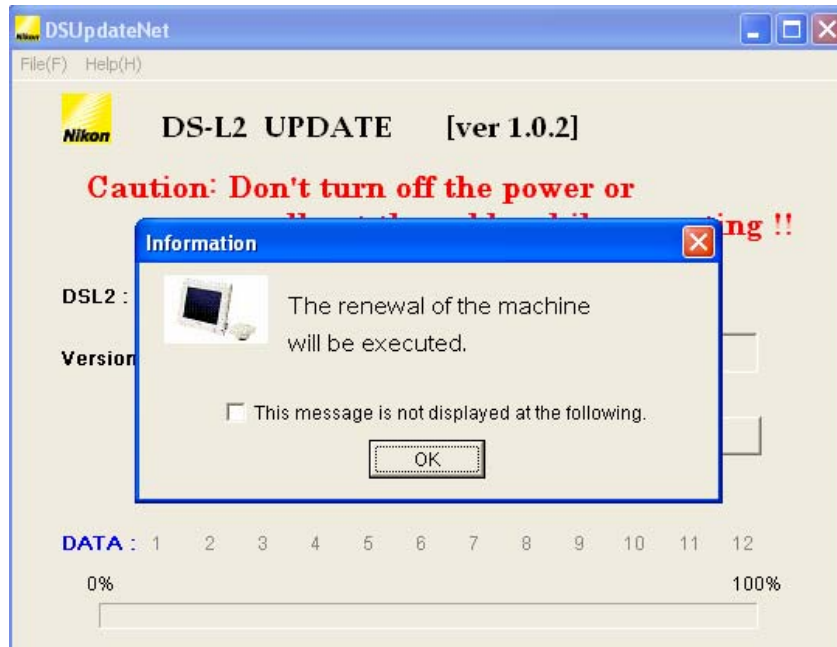
8. Open the “Downloader” folder and double click “DS UpdateNet”



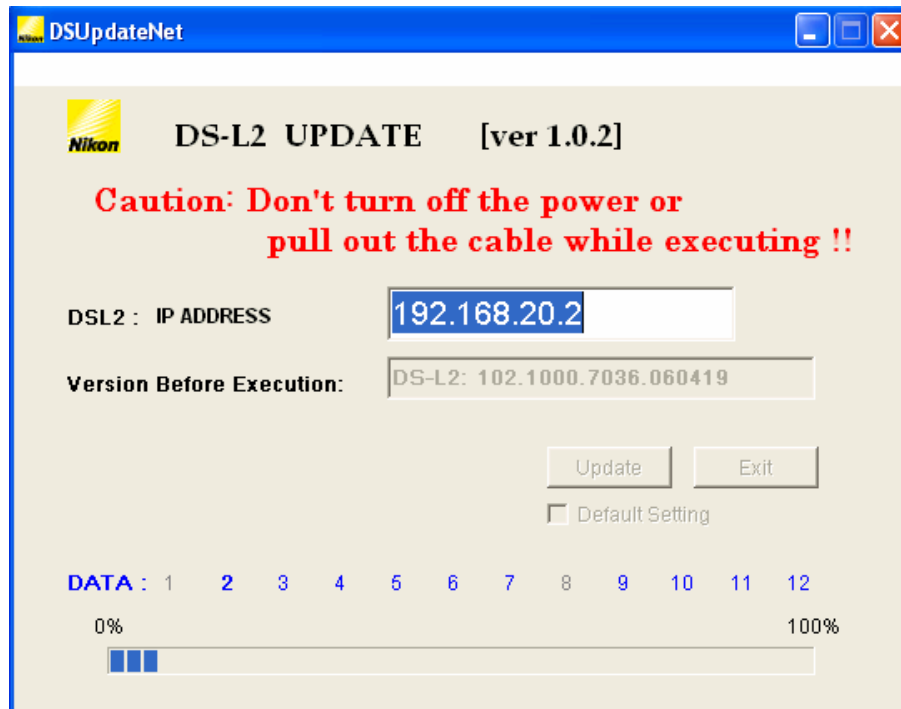
9. The following menu appears and make sure the correct IP address is entered. When entering the IP address do not type in “leading” zeros or you may get a warning message to “check the IP address”. You will first see a warning message to make sure all flash cards and USB memory devices are removed. Click UPDATE.



10. The following screen appears. Select OK.

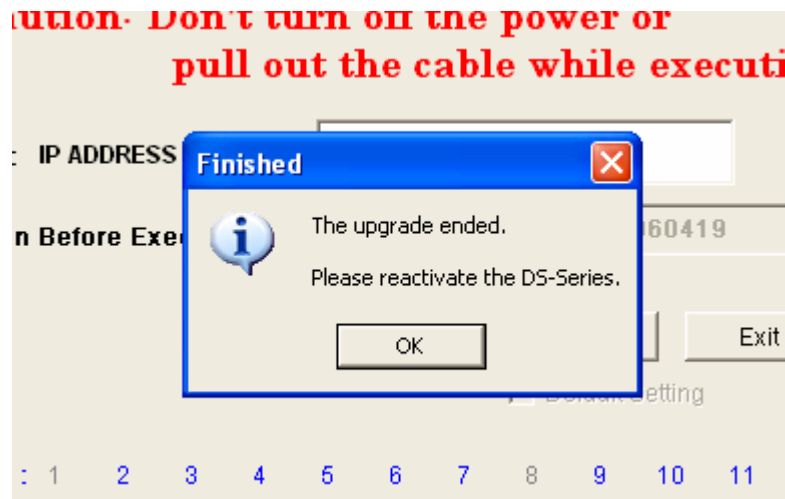


11. Progress of the upgrade will be indicated on the progress bar and the unit may turn off and on during the process. This may take a few minutes depending on the upgrade version. Do not turn off the unit or disconnect the cables.





- When the upgrade is complete the following menu appears. Click OK and turn off and turn on the L2 to complete the upgrade. Check the version to make sure the upgrade was successful.



- Make sure enable the Windows firewall if you disabled it for this upgrade.

ED